

love natural love you ♡

beauty
food & drink
home
health & fitness



7-9 July 2017
Olympia London

Exhibitor
Information

your. passion our expertise

Love Natural Love You is a unique live experience; an event that treats over 35,000 health-savvy Londoners to a delectable day of natural gorgeousness!

Visitors attend to try and buy delicious specialist natural, free from and organic food, enjoy bite-size cooking demonstrations (to whet their appetites), indulge in natural and organic beauty treatments, and catch inspiring speakers delivering practical 'life hacks' for enhanced health and wellbeing.

Naturally, not-to-be-missed by any brand in the natural food, beauty, living, fitness and health market!

Come and play in the best natural shop in the world, at London's Olympia on 7-9 July 2017.



ROI



sample / sell
to a huge
number of
potential
customers

meet customers
face-to-face

build new
customer
databases
to build the
future of your
brand

align your
brand with
the best in the
market



build
lifelong
brand
advocates

sell to a high
spending
passionate
audience

invaluable
immediate
feedback
on product
ranges



our
visitors

... love
food



From artisan producers and small manufactures, to big brands and household names, the show hosts a vast range of exquisite, great tasting, natural, organic food and drink.

Brands we work with:

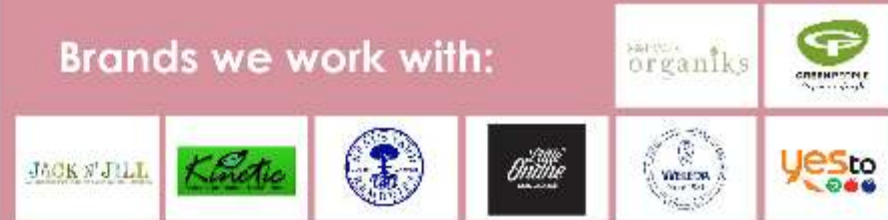


love
beauty



Inspiring, creative and dedicated brands, delivering an extensive collection of beauty, skin, cosmetics and hair care items.

Brands we work with:



Love Natural Love You hosts the prestigious SkinCare Awards. Participate, promote, and then benefit from increased on-site sales.



love health



We all know that health is a key driver in natural and organic growth. We welcome leading supplements, herbal remedies, vitamins, therapies and natural healthcare products, to aid our audience in supporting their health, the natural way!

Brands we work with:



love home



Our visitors' natural and organic passion does not stop at food and beauty, it extends to absolutely everything. From household cleaning products, to bedding, furniture and clothing.

Brands we work with:



love fitness



Fitness is a natural part of looking after yourself. Our visitors care about what they eat and put on their skin, this extends to their health and fitness. From natural protein powder, fitness clothing and accessories to yoga retreats and wellness, this show delivers it all!

Brands we work with:



the audience

Love Natural Love You has cultivated a huge 35,000 strong affluent buying audience, who are 100% bought into the extensive benefits of a natural and organic lifestyle. And this is the only event purely dedicated to them.

Our passion, dedication and experience has meant that we have been able to create a must-attend event for major brands, established players and start-ups. The show is supported by the key market associations and, crucially, has already gained the support and attendance of experts and thought-leaders in this marketplace.

Our visitors attend the show to buy, they are not window shoppers nor time wasters, they are buyers, they are influencers, they are your future.

Result: Love Natural Love You delivers ROI and boosts your company's profits.

Not only has the show gained a strong consumer audience but it has also gained the attention of powerful market buyers.

social media savvy

millennials

health conscious

ethically aware

professionals

fitness focused

influential



PLANET
ORGANIC

as nature
intended

WHOLE
FOODS

Waitrose

HOLLAND & BARRETT



SELFRIDGES & CO



topline research results

average
age **31**
91% female



96% will
recommend
brands they saw
at the show

£50.4 million
collective
annual spend
on relevant
products



average
dwell time
3.5 hours

£57,859
average
household
income



92%
bought
at the show

95% will
spend money
with exhibitors
in the next
12 months



the natural choice?



book your stand

It's as easy as 1, 2, 3...

1

contact us today
and we will find the
right stand for you

2

we organise your
booking, put you on
our website and
provide you with all
the information
you need

3

take a stand and
boost your profits

contact us

Carmen Chan, Sales Manager

Tel +44 (0) 1442 289 922

Email carmen@f2fevents.co.uk

**Three
shows
in one**

The Allergy & Free From Show and Just V Show sharing a hall with Love Natural Love You means we deliver you a massive audience, passionate about the food they eat and the lifestyle, beauty and health products that they buy.

Exhibiting

Shell Scheme
£350 +VAT per sqm

Includes:

- Space
- Walls
- Carpet
- Fascia
- Name Board
- Website Profile
- Exhibitor Marketing Support

Space Only
£300 +VAT per sqm

Includes:

- Space
- Website Profile
- Exhibitor Marketing Support

*Space only exhibitors are required to build their own stands subject to venue restrictions.

Tailored Community Promotions

Please get in touch to discuss your requirements, we have numerous options to engage with our visitor community including access to our unique databases via dedicated eShots and sponsored social campaigns.

Sponsoring

Brand your way to the top. Want to elevate the profile of your brand, launch a new product or re-position your brand within the market? Sponsorship is the route to success. Improving your brand recall is at the heart of our packages and there is something for any business.

www.f2fsponsorship.co.uk

www.LNLY.co.uk